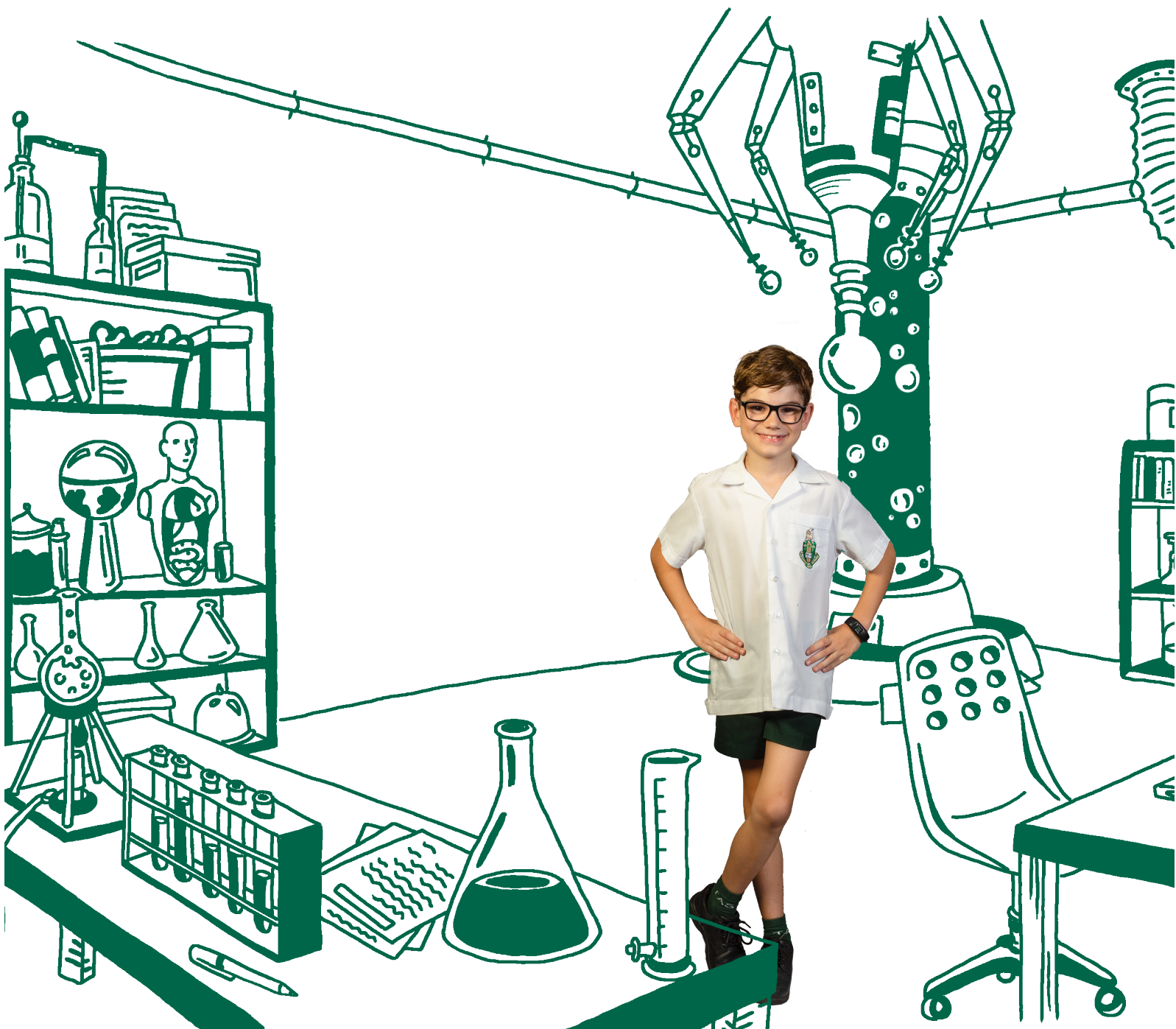


SCHOOL FEE PAYMENT INFORMATION



2021

TAS

TRINITY ANGLICAN SCHOOL



Payment options

At Trinity Anglican School there are two ways in which you can pay your compulsory fees (capital levy, resource levy and tuition) as shown below:

Pay each term in full when statement is issued

School fees are issued four times a year at the beginning of each school term. If you wish to pay your account each term you do not need to advise the school. When your statement is issued you can pay the account using the payment information shown on the last page of your statement.

Pay on a payment plan (weekly, fortnightly or monthly)

Payment plan

We understand that you may wish to pay your school fees in regular instalments (by direct debit or credit card). Due to the number of parents who elect to pay their fees by payment plan we process the payments in batches on **Fridays only**.

We have a number of different payment plan options as shown below:

Weekly (commencing on the 15/01/2021 for 44 weeks)

Fortnightly Cycle A (commencing on 15/01/2021 for 22 fortnights)

Fortnightly Cycle B (commencing on 22/01/2021 for 22 fortnights)

Monthly (On the 18th of each month for 11 months- commencing January)

Your payment plan can be paid by direct debit from your nominated cheque/savings account. If paying monthly you can elect to have the payment deducted from your nominated credit card if you prefer.

Pay cycles for future years will follow the same pattern but with different calendar dates. **Please note:** that the payment method and frequency that you nominate will continue throughout your time with us at Trinity Anglican School unless you advise otherwise.

If you would like to elect to pay your account in instalments please complete the Direct Debit Request (DDR) form and send to ar@tas.qld.edu.au. The form can be found on parent lounge or [here](#).

Payment plan calculator

If you decide that a payment plan is the best option for your family, you may want to use the payment plan calculator below to calculate the instalment amount that will be deducted from your nominated bank account at the elected instalment frequency.

Child	Year level in 2021	Oldest to youngest	Weekly (44)	Fortnightly (22)	Monthly (11)
1		Table A			
2		Table B			
3		Table C			
		Total			

Populate this table using the below information



Year level	Total annual amount for tuition & levies	Weekly instalment amount (44)	Fortnightly instalment amount (22)	Monthly instalment amount (11)
Table A- Oldest Student				
Prep-Year 2	4,990.00	113.41	226.82	453.64
Year 3-5	5,990.00	136.14	272.28	544.55
Year 6-9	7,990.00	181.60	363.19	726.37
Year 10-12	8,990.00	204.32	408.64	817.28
Table B- Second student				
Prep-Year 2	4,631.50	105.27	210.53	421.05
Year 3-5	5,481.50	124.58	249.16	498.32
Year 6-9	7,331.50	166.63	333.25	666.50
Year 10-12	8,181.50	185.95	371.89	743.78
Table C - Third student				
Prep-Year 2	4,273.00	97.12	194.23	388.46
Year 3-5	4,973.00	113.03	226.05	452.10
Year 6-9	6,673.00	151.66	303.32	606.64
Year 10-12	7,373.00	167.57	335.14	670.28

Please note: For further information on sibling discounts on the tuition fee component of your compulsory fees please view the 2021 fee schedule. For assistance or further information please contact ar@tas.qld.edu.au.



Inspiring the curious.

 tas.qld.edu.au



Kewarra Beach Campus
Poolwood Road, Kewarra Beach
Ph: (07) 40368 230



White Rock Campus
200 Progress Road, White Rock
Ph: (07)40368 111

TAS
TRINITY ANGLICAN SCHOOL